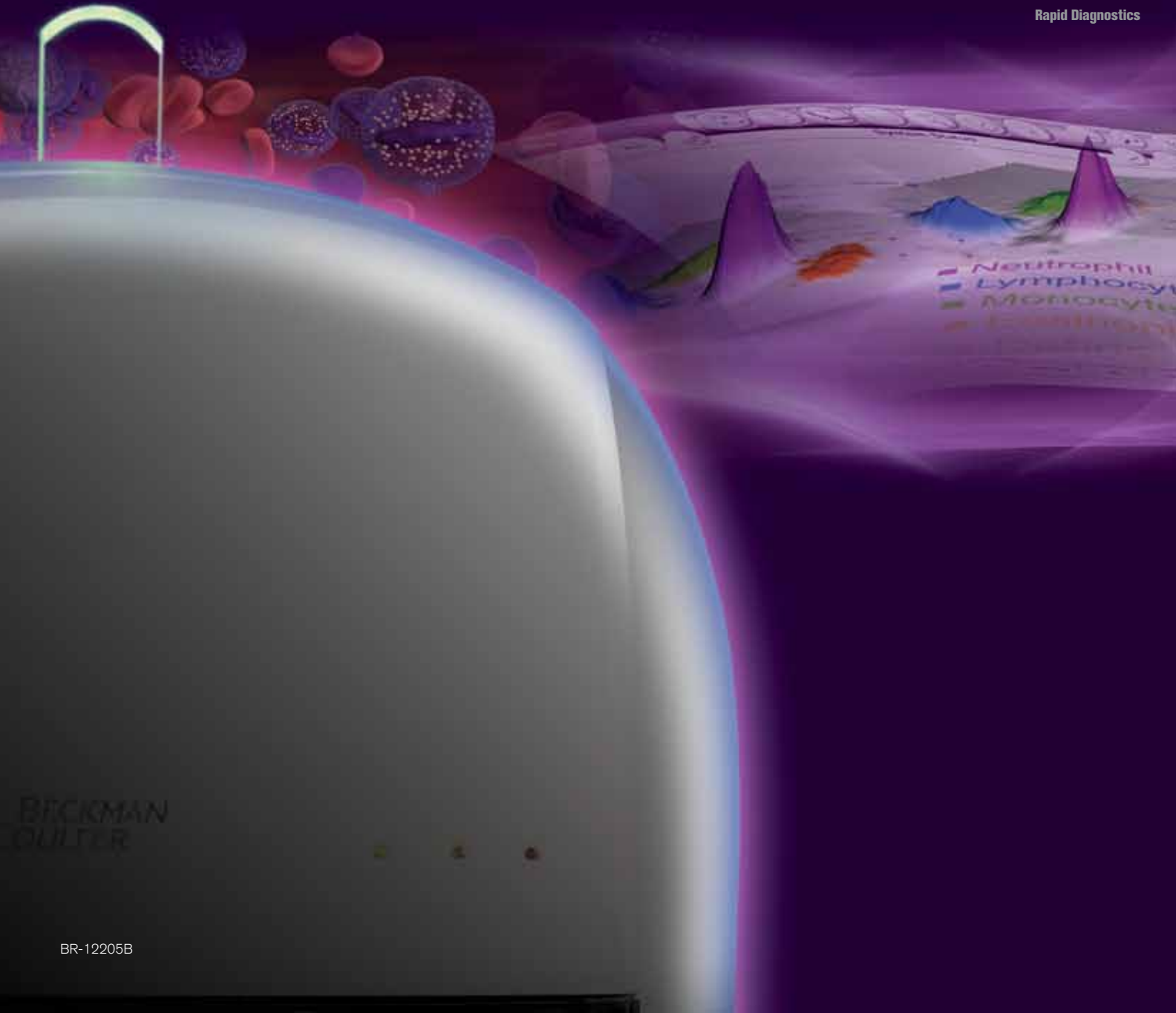


Transforming the  
**hematology** laboratory.

UniCel DxH 800 Coulter Cellular Analysis System

Blood Banking  
Centrifugation  
Chemistry  
Flow Cytometry  
**Hematology**  
Hemostasis  
Immunoassay  
Information Systems  
Lab Automation  
Molecular Diagnostics  
Rapid Diagnostics



BECKMAN  
COULTER

# Transforming the way you work.

The UniCel DxH 800 Coulter Cellular Analysis System is a perfect fit for today's "Lean" laboratory practices. Performance is maximized because a smaller amount of effort is required from your staff, fewer resources are needed and you acquire test results in less time. The end result is incomparable value for your laboratory.

## Designed for Reliability

From the ground up, the UniCel DxH 800 is engineered for ruggedness, reliability and dependability.

- Single aspiration pathway simplifies calibration and quality control process while eliminating mode-to-mode issues
- Sample Aspiration Module (SAM), with its unique design, reduces aspiration volume, especially benefitting pediatric samples



The UniCel DxH 800 offers pediatric sample capability.

- 2D-Digital Bar Code Technology maximizes reading capability, preventing errors and reducing misreads
- Remote Management System (RMS) proactively performs diagnostics with real-time troubleshooting, ensuring you of increased instrument uptime



The UniCel DxH 800 is a perfect fit for today's "Lean" laboratory practices.

- "Load 'n' go" operation is available with the Specimen Transport Module (STM), which uses a patented magnetic system that continuously loads up to 20 cassettes

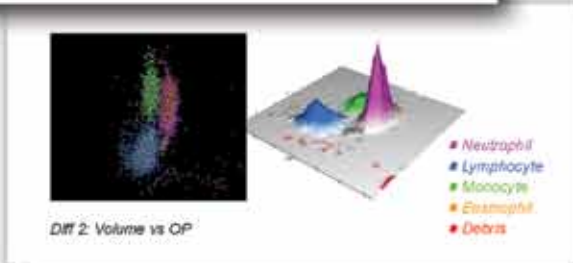
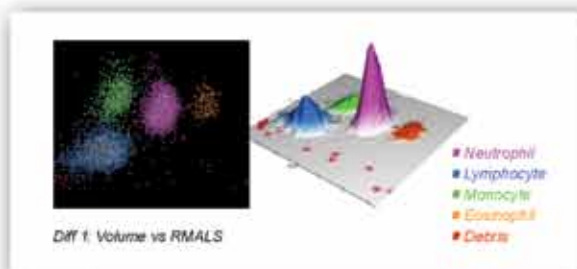


The "load 'n' go" feature allows walk-away operation.

## Exceptional Quality of Results

With numerous patents pending or granted, the UniCel DxH 800 platform is built on a host of novel and proprietary technologies designed to increase accuracy, precision, sensitivity and specificity.

- High-Definition Cellular Analysis provides four times greater resolution to help you achieve a new level of performance
- With the Flow Cytometric Digital Morphology (FCDM) you get 10 times more data per sample leading to reduced review rates



Flow cytometric digital morphology optimizes system performance.

- Unrivaled NRBC: With its multi-angle scatter technology, onboard reagents and advanced algorithms, the DxH 800 delivers unequalled performance without the need for exclusive or expensive stains
- Using its data fusion capability, the system will correct for most of the common interferences in today's laboratory, ensuring first-pass accuracy and efficiency

## Innovative Lean Efficiency Tools

From receipt of sample to reported result, the UniCel DxH 800 provides one of the leanest profiles of any analytical system in the industry. State-of-the-art data acquisition technology gathers significantly more data on each cell than any preceding hematology system.

- Extended decision rules promote consistent quality laboratory practices while reducing post-analytical errors and review rates

- Customizable repeat/reflex testing automatically tracks samples, reduces retrieval time and repeats the analysis without operator intervention
- Shares the same easy-to-use user interface as the UniCel DxH and UniCel DxL systems, reducing the training needs of your laboratory personnel



Easy-to-use interface reduces training.

- Intelligent Quality Monitoring (ICM) promotes confidence in test results by allowing real-time monitoring and avoiding process variances

## Revolutionary Scalability

A host of innovative features enable you to tailor the UniCel DxH 800 to meet precisely your laboratory's needs.

- Intelligent workload distribution optimizes workflow by achieving rapid turnaround times, providing faster STAT and emergency department results
- The space-saving design creates an efficient working environment
- On-board tracking enables optimal reagent management
- With its "built-in automation" the DxH 800 can grow as you grow

The UniCel DxH 800 offers you a complete testing solution that improves patient care and lab productivity ... with effortless operation. Plus, it's backed by the award-winning, world-class service and support of Beckman Coulter.

# UniCel DxH 800 Coulter Cellular Analysis System Specifications

## Available Test Menu

CBC	WBC, UWBC, RBC, HGB, HCT, MCV, MCH, MCHC, RDW, RDW-SD, PLT, MPV
Differential	NE, LY, MO, EO, BA, NRBC, NE#, LY#, MO#, EO#, BA#, NRBC#
Retic	RET, RET#, MRV, IRF
Body Fluids (Spinal, Serous and Synovial)	TNC, RBC

## Throughput

Up to 100 samples/hr

## Aspiration Volumes

Open/Closed Vial 165 µL

## Power

100–264 VAC and 48–62 HZ

DxH 800 System with System Manager and printer draws 1,185 watts

DxH 800 System with System Manager, printer and UPS draws 2,390 watts

## Weight and Dimensions

	Depth	Width	Height	Weight
Specimen Processing Module	78.7 cm (31.0 in)	76.2 cm (30.0 in)	96.5 cm (38.0 in)	~117.5 kg (260 lb)
Pneumatic Supply	51.0 cm (20.0 in)	21.6 cm (8.5 in)	36.8 cm (14.5 in)	~18.4 kg (40.5 lb)
Optional Floor Stand	78.7 cm (31.0 in)	76.2 cm (30.0 in)	83.8 cm (33.0 in)	~125.6 kg (277 lb)

## Whole Blood Performance — Measuring Range

WBC	0.000 – 400.000 X 10 <sup>3</sup> µL
RBC	0.000 – 8.500 X 10 <sup>6</sup> µL
HGB	0.00 – 25.50 g/dL
MCV	50.00 – 150.00 fL
PLT	0.0 – 3,000.0 X 10 <sup>3</sup> µL
NRBC	0.00 – 600.00/100 WBC
Retic	0.000 – 30.000 %

## Data Management

Computer	Microsoft* Windows* XP
Database	40,000 patient results with graphics
Quality Assurance	QC with Levey-Jennings Graph, XB/XM for Moving Averages, Daily Check, Intelligent Quality Monitoring

## Sample Transport Capabilities

Capacity	20 five-tube cassettes
Bar Codes	Digital Bar Code with 2D Bar Code capability
Sample ID	Up to 22 characters



Optional floor stand helps organize consumables and makes changing reagents easy.

[www.beckmancoulter.com/DxH](http://www.beckmancoulter.com/DxH)



Shop online at  
[www.beckmancoulter.com/eStore](http://www.beckmancoulter.com/eStore)

\*Microsoft and Windows are registered trademarks of Microsoft Corporation.  
Beckman Coulter, the stylized logo, UniCel and Coulter are registered trademarks of Beckman Coulter, Inc.  
DxH is a trademark of Beckman Coulter, Inc.



Australia, Gladesville (61) 2 9844 6000 Austria, Vienna (43) 1 291 01 241 Canada, Mississauga (1) 905 819 1234  
China, Shanghai (86) 21 3865 1000 Croatia, Zagreb (38) 51 489 9003 Czech Republic, Prague (420) 272 01 73 32  
Eastern Europe, Middle East, North Africa, South West Asia: Switzerland, Nyon (41) 22 365 3707 France, Villepinte (33) 1 49 90 90 00  
Germany, Krefeld (49) 2151 33 35 Hong Kong (852) 2814 7431 India, Mumbai (91) 22 3080 5000 Italy, Cassina de' Pecchi, Milan (39) 02 953921  
Japan, Tokyo (81) 3 5530 8500 Korea, Seoul (82) 2 404 2146 Latin America (1) (305) 380 4709 Malaysia, Kuala Lumpur (60) 3 5621 4793  
Mexico, Mexico City (001) 52 55 9183 2800 Netherlands, Woerden (31) 348 462462 Poland, Warszawa (48) 22 366 0180 Puerto Rico (787) 747 3335  
Singapore (65) 6339 3633 South Africa/Sub-Saharan Africa, Johannesburg (27) 11 564 3203 Spain, Madrid (34) 91 3836080  
Sweden, Bromma (46) 8 564 85 900 Switzerland, Nyon (41) 0800 850 810 Taiwan, Taipei (886) 2 2730 2500 Turkey, Istanbul (90) 216 570 17 17  
UK, High Wycombe (44) 01494 441181 USA, Brea, CA (1) 800 352 3433, (1) 714 993 5321