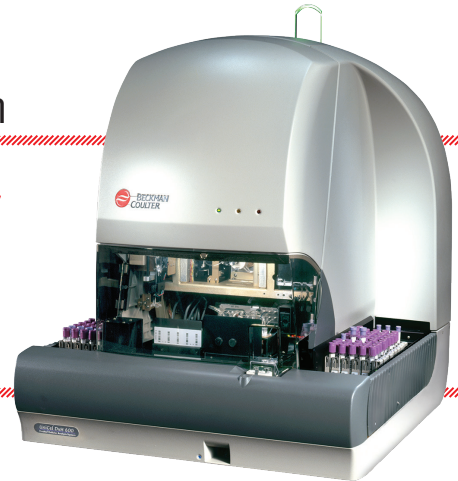


UniCel DxH 600 Coulter Cellular Analysis System

DESIGNED FOR EFFICIENCY IN YOUR LAB.

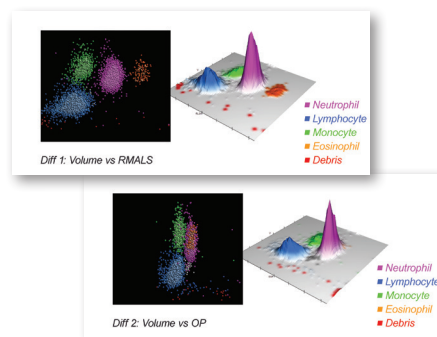


INTRODUCTION >

Beckman Coulter is once again leading the way in lean laboratory practices and efficiency with the introduction of the UniCel DxH 600 Coulter Cellular Analysis System. Delivering exceptional quality of results, first-pass accuracy and efficiency through cutting-edge technology the UniCel DxH 600 Coulter Cellular Analysis System delivers unparalleled value for your mid-to-large volume laboratory—all with a small footprint.

SUPERIOR QUALITY OF RESULTS >

- › Multi-Angle Flow Cytometric Digital Morphology technology and advanced algorithms ensure **exceptional quality of results**
- › 2D-dataplots, surface plots and 3D-cube formats allow for **enhanced visual cellular investigation**



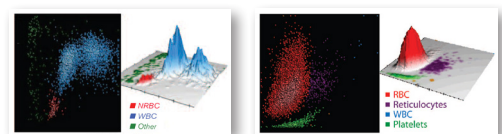
Flow Cytometric Digital Morphology optimizes system performance

IMPROVED EFFICIENCY >

- › Extended Decision Rules capability and **Auto-Rerun and Reflex testing** reduce TAT and the need for manual operator intervention
- › Run standard and **micro-volume Whole Blood Sample Tubes in Automatic Cassette Mode**
- › Same technology and User Interface as the UniCel DxH 800 allow for **true standardization of process and results** across the DxH series and **reduces laboratory personnel training needs**

EXTENDED TESTING CAPABILITIES >

- › Multi-Angle Flow Cytometric Digital Morphology technology delivers **Automatic NRBC enumeration**, without the need for additional reagents or expensive stains.
- › **Automatic Reticulocyte and Body Fluid Analysis** capabilities



Data Plots and Surface Plots for NRBCs and Reticulocytes

UniCel DxH 600 Coulter Cellular Analysis System Specifications >

AVAILABLE TEST MENU

CBC	WBC, RBC, HGB, HCT, MCV, MCH, MCHC, RDW, RDW-SD, PLT, MPV
Differential	NE, LY, MO, EO, BA, NRBC, NE#, LY#, MO#, EO#, BA#, NRBC#
Retic	RET, RET#, MRV, IRF
Body Fluids (Spinal, Serous and Synovial)	TNC, RBC

THROUGHPUT

Up to 100 samples/hr

ASPIRATION VOLUMES

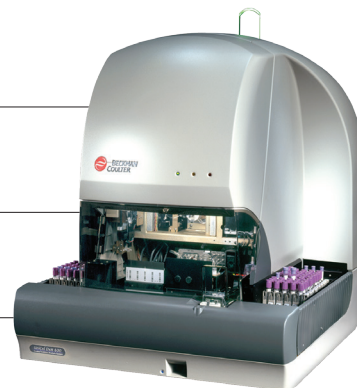
Open/Closed Vial 165 µL

POWER

100–240 VAC and 48–62 HZ

DxH 600 System with System Manager and printer draws 1,185 watts

DxH 600 System with System Manager, Printer and UPS draws 2,390 watts



WEIGHT AND DIMENSIONS

	DEPTH	WIDTH	HEIGHT	WEIGHT
Specimen Processing Module	78.7 cm (31.0 in)	76.2 cm (30.0 in)	96.5 cm (38.0 in)	~117.5 kg (260 lb)
Pneumatic Supply	51.0 cm (20.0 in)	21.6 cm (8.5 in)	36.8 cm (14.5 in)	~18.4 kg (40.5 lb)

WHOLE BLOOD PERFORMANCE — MEASURING RANGE

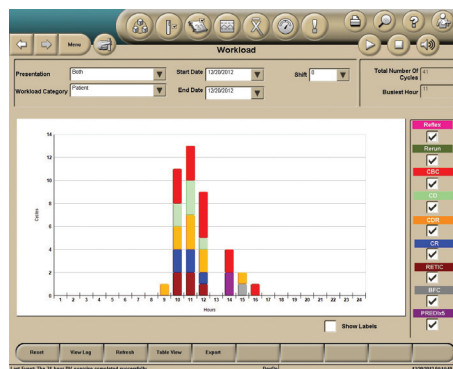
WBC	0.050 – 400.000 X 10 ³ µL
RBC	0.005 – 8.500 X 10 ⁶ µL
HGB	0.10 – 25.50 g/dL
MCV	50.00 – 150.00 fL
PLT	3.0 – 3,000.0 X 10 ³ µL
NRBC	0.00 – 600.00/100 WBC
Retic	0.000 – 30.000 %

DATA MANAGEMENT

Database	40,000 Patient results with Graphics
Quality Assurance	QC with Levy-Jennings Graph, XB/XM for Moving Averages, Daily Check, Intelligent Quality Monitoring

SAMPLE TRANSPORT CAPABILITIES

Capacity 20 five-tube cassettes
 Bar Codes Digital Bar Code with 2D Bar Code capability
 Sample ID Up to 22 characters



Intelligent Workload Tracking Software allows for workload tracking per day, hour and even test

WWW.BECKMANCOULTER.COM/DXH

Beckman Coulter, the stylized logo, Coulter and UniCel are trademarks of Beckman Coulter, Inc. and are registered with the USPTO. DxH is a trademark of Beckman Coulter, Inc.

For Beckman Coulter's worldwide office locations and phone numbers, please visit www.beckmancoulter.com/contact



DS-17805B B2013-14074

© 2013 Beckman Coulter, Inc.

www.beckmancoulter.com