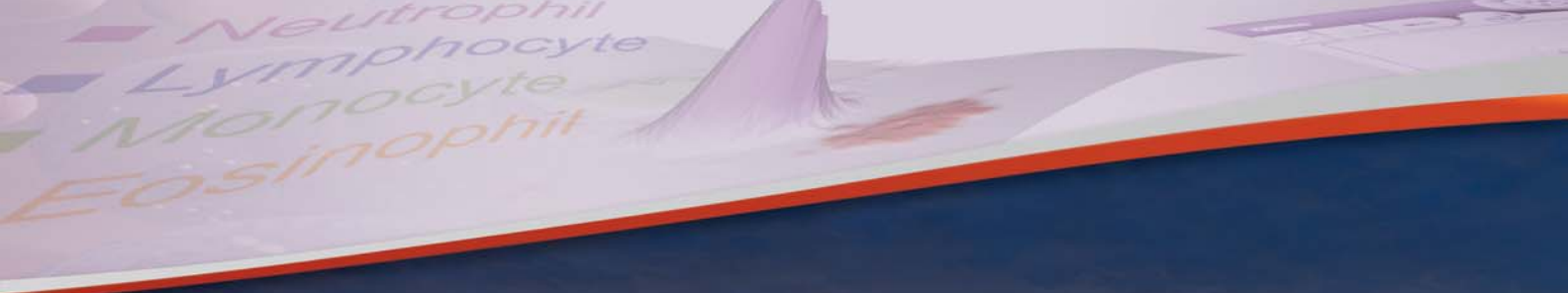


Transforming the hematology laboratory.

UniCel DxH Coulter Cellular Analysis Systems

Blood Banking
Centrifugation
Chemistry
Flow Cytometry
Hematology
Hemostasis
Immunoassay
Information Systems
Lab Automation
Molecular Diagnostics
Rapid Diagnostics

UniCel[®] DxH[™] connectivity
and Sildemaker Stainer for
Investigational Use Only.
The performance
characteristics of this product
have not been established.



This changes
everything.



Today's hematology laboratories are challenged by ever-increasing pressures to improve productivity, decrease turnaround time and reduce overall costs. The UniCel DxH platform is designed to meet these challenges head-on and **transform** your laboratory, with **unparalleled quality of results, innovative efficiency solutions** and **revolutionary scalability**.

Welcome the **new day**
in **cellular analysis**.

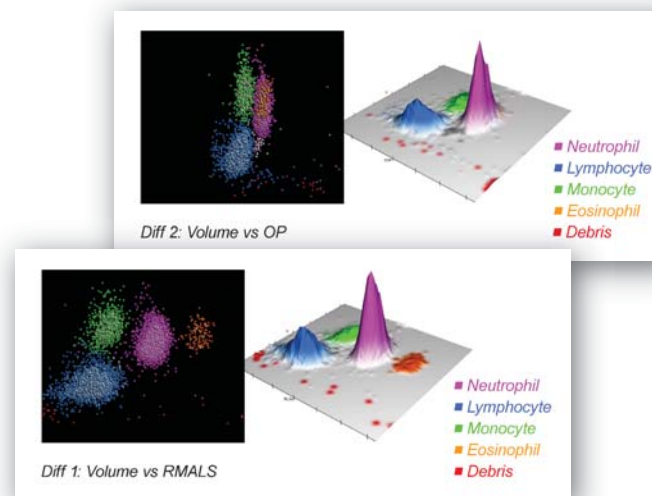
Transforming the way you work.

Innovations that lean your lab.

- Auto repeat/reflex testing
- Intelligent workflow distribution
- Consolidated reagent management
- Single aspiration pathway
- Extended decision rules
- Space efficiency
- UniCel family look and feel
- Body Fluid Mode for analyzing CSF, Serous and Synovial fluids



"Load 'n' go" capability allows walkaway operation.



Flow cytometric digital morphology optimizes performance.

Technologies delivering the right result the first time.

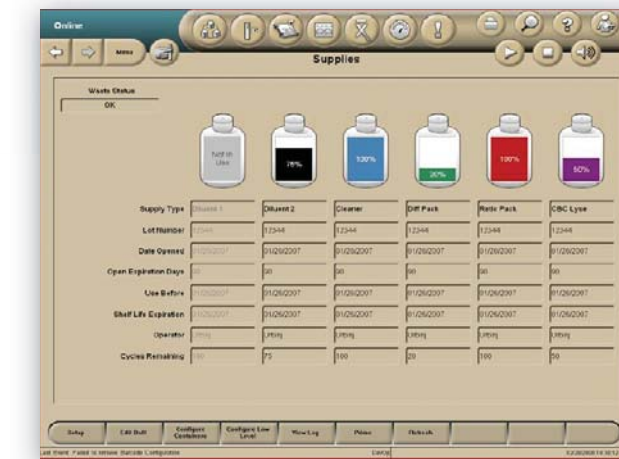
- Digital signal processing
- High-definition cellular analysis
- Flow cytometric digital morphology
- Multiple angles of light scatter
- Advanced algorithm applications
- 10 times more data than existing technologies

Revolutionary scalability.

- Built-in automation
- No track required
- Scalable solutions that grow as your work grows



DxH 801
Configuration



On-board tracking enables optimal reagent management.

Systems designed to be there when you need them most.

- Modular architecture
- No pinch valves
- No silicon tubing
- Significantly fewer parts
- Unparalleled reliability
- Remote monitoring system (RMS)
- Reagent management

More than just an analyzer.

- Integrated slidemaker stainer
- Configurable workcells
- Workflow management tools
- Future connections to line automation systems
- Built-in connection for future expanded applications



Multi-use input/output drawer for slide management.

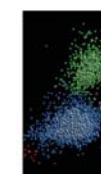
Transforming the way you work.

Innovations that lean your lab.

- Auto repeat/reflex testing
- Intelligent workflow distribution
- Consolidated reagent management
- Single aspiration pathway
- Extended decision rules
- Space efficiency
- UniCel family look and feel
- Body Fluid Mode for analyzing CSF, Serous and Synovial fluids



"Load 'n' go" capability allows walkaway operation.



Diff 1: Volume

Flow cytometry

1

- High throughput
- Flow cytometry
- Multi-parameter
- Advanced
- 10+ technologies

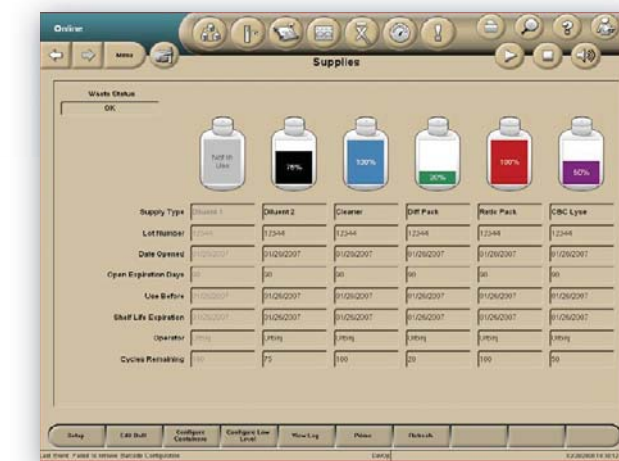
Revolutionary scalability.

- Built-in automation
- No track required
- Scalable solutions that grow as your work grows



DxH 1601 Configuration

2



On-board tracking enables optimal reagent management.

Systems designed to be there when you need them most.

- Modular architecture
- No pinch valves
- No silicon tubing
- Significantly fewer parts
- Unparalleled reliability
- Remote monitoring system (RMS)
- Reagent management

More than just an analyzer.

- Integrated slidemaker stainer
- Configurable workcells
- Workflow management tools
- Future connections to line automation systems
- Built-in connection for future expanded applications



Multi-use input/output drawer for slide management.

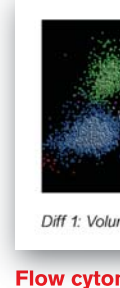
Transforming the way you work.

Innovations that lean your lab.

- Auto repeat/reflex testing
- Intelligent workflow distribution
- Consolidated reagent management
- Single aspiration pathway
- Extended decision rules
- Space efficiency
- UniCel family look and feel
- Body Fluid Mode for analyzing CSF, Serous and Synovial fluids



"Load 'n' go" capability allows walkaway operation.



Flow cytometry



- High
- Flow
- Mu
- Ad
- 10 tec

Revolutionary scalability.

- Built-in automation
- No track required
- Scalable solutions that grow as your work grows



DxH 2401
Configuration



Reagent management.

ed to be there
them most.



(MS)

More than just an analyzer.

- Integrated slidemaker stainer
- Configurable workcells
- Workflow management tools
- Future connections to line automation systems
- Built-in connection for future expanded applications



Multi-use input/output drawer for slide management.

UniCel DxH Coulter Cellular Analysis System Configurations



UniCel DxH 800



UniCel DxH SMS



UniCel DxH 1600



UniCel DxH 2400



UniCel DxH 1601



UniCel DxH 801



UniCel DxH 2401

Configurations*	Depth		Width		Height**		Weight***	
	cm	in	cm	in	cm	in	kg	lb
DxH 800	78.7	31	76.2	30	180.3	71	243.1	660
DxH SMS	78.7	31	93.0	37	190.5	75	287.3	780
DxH 1600	78.7	31	152.4	60	180.3	71	486.2	1320
DxH 2400	78.7	31	228.6	90	180.3	71	729.3	1980
DxH 801	78.7	31	170.1	67	190.5	75	530.4	1440
DxH 1601	78.7	31	246.3	97	190.5	75	773.5	2100
DxH 2401	78.7	31	322.5	127	190.5	75	1016.6	2760

*All configurations ending in 1 include an integrated DxH Slidemaker Stainer.

**Height includes floorstand.

*** Estimated on floorstands loaded with reagents full.



Shop online at
www.beckmancoulter.com/eStore

Beckman Coulter, the stylized logo, UniCel and Coulter are registered trademarks of Beckman Coulter, Inc. DxH is a trademark of Beckman Coulter, Inc.

Australia, Gladstone (61) 2 9844 6000 Austria, Vienna (43) 1 291 01 241 Canada, Mississauga (1) 905 819 1234
 China, Shanghai (86) 21 3865 1000 Croatia, Zagreb (38) 51 489 9003 Czech Republic, Prague (420) 272 01 7332
 Eastern Europe, Middle East, North Africa, South West Asia: Switzerland, Nyon (41) 22 365 3707 France, Villepinte (33) 1 49 90 90 00
 Germany, Krefeld (49) 2151 3335 Hong Kong (852) 2814 7451 India, Mumbai (91) 22 3080 5000 Italy, Cassina de' Pecchi, Milan (39) 02 953921
 Japan, Tokyo (81) 3 5530 8500 Korea, Seoul (82) 2 404 2146 Latin America (1) (305) 360 4709 Malaysia, Kuala Lumpur (60) 3 5621 4795
 Mexico, Mexico City (001) 52 55 9183 2800 Netherlands, Woerden (31) 348 462462 Poland, Warszawa (48) 22 366 0180 Puerto Rico (787) 747 3335
 Singapore (65) 6339 3633 South Africa/South-Saharan Africa, Johannesburg (27) 11 56 43203 Spain, Madrid (34) 91 3836080
 Sweden, Bromma (46) 856 485 900 Switzerland, Nyon (41) 0800 850 810 Taiwan, Taipei (886) 2 2 750 2500 Turkey, Istanbul (90) 216 570 1717
 UK, High Wycombe (44) 01494 441181 USA, Brea, CA (1) 800 352 3433, (1) 714 993 5321

